



**Wireless Devices Inc. (Taiwan)**

## **PC Base Paging System (POCSAG)**

---

(Option with 300 subscribers and 30 can messages data base)

Model No. EM-898 Series

### **Operation Manual**

Wireless Devices Inc. (Taiwan)



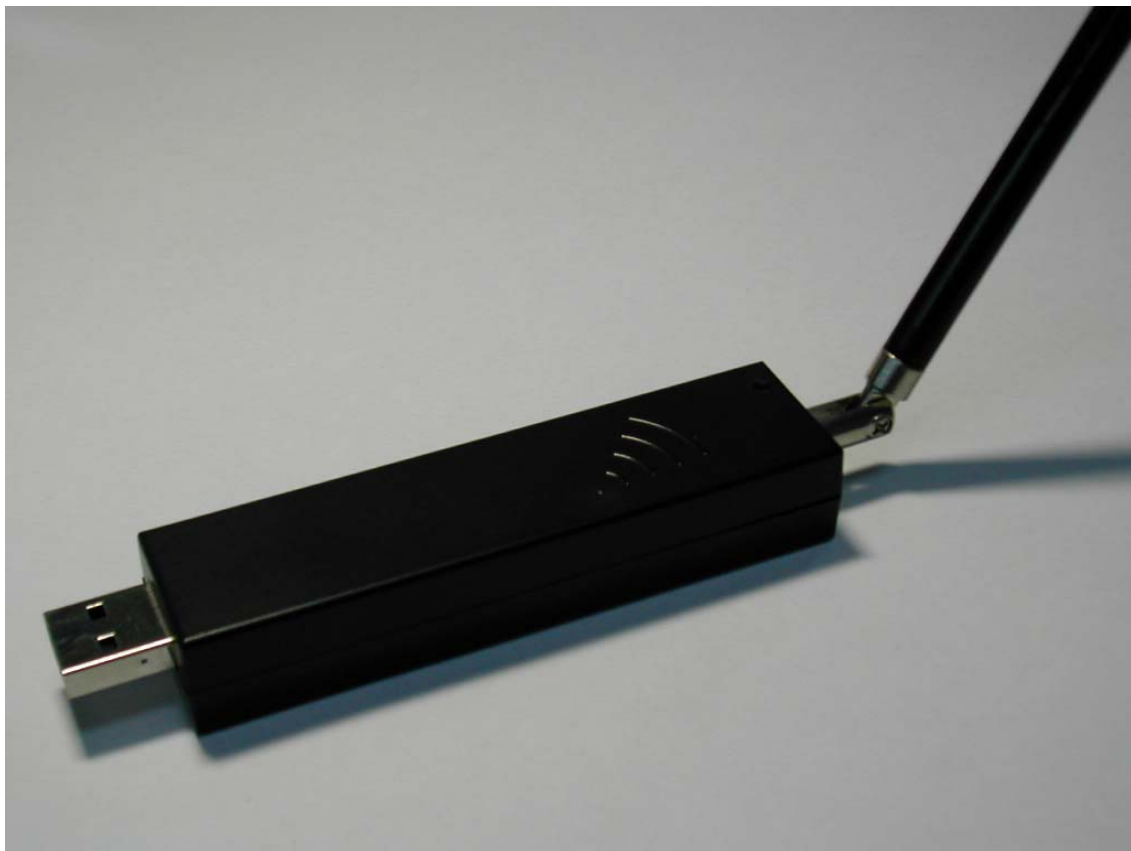
The EM-898 paging device series is designed to automatically and instantly page the e-mail subscriber within the coverage area once the P/C or Notebook receives the incoming e-mail messages. Also, you can take it as your owned office paging system.

*The EM-898-10 is built-in 10mW Transmitter.*

*The EM-898-50 is built-in 50mW Transmitter.*

*The EM-898-100 is built-in 100mW Transmitter.*

*The EM-898-150 is built-in 150mW Transmitter.*



## Specifications

Item NO.	EM-898-10/50	EM-898-100	EM-898-150
Frequency:	One Channel from 410MHz to 490MHz by crystals controlled.		
Frequency Stability::	10 ppm at 25°C.	10 ppm at 25°C.	10 ppm at 25°C.
Paging format:	POCSAG		
Baud rate:	512bps / 1200bps / 2400bps.		
Message data:	Numeric or alpha-numeric, max 40 characters per each paging		
RF output	10~50mW	100mW	150mW
Modulation:	FSK ,		
Deviation:	4.5Khz		
Operation Temp:	-20°C ~ +70°C.		
Pager Capacity:	from 8 to 2097151 Pager Capcode		
Operating Voltage:	+5V from USB port		
Coverage distance	about 8,000 square Meter	about 50,000 square Meter	about 85,000 square Meter
Size of Housing::	90mm X 23mm X 16mm	90mm X 23mm X 16mm	90mm X 23mm X 16mm
Model Weight:	30gs	32gs	38gs



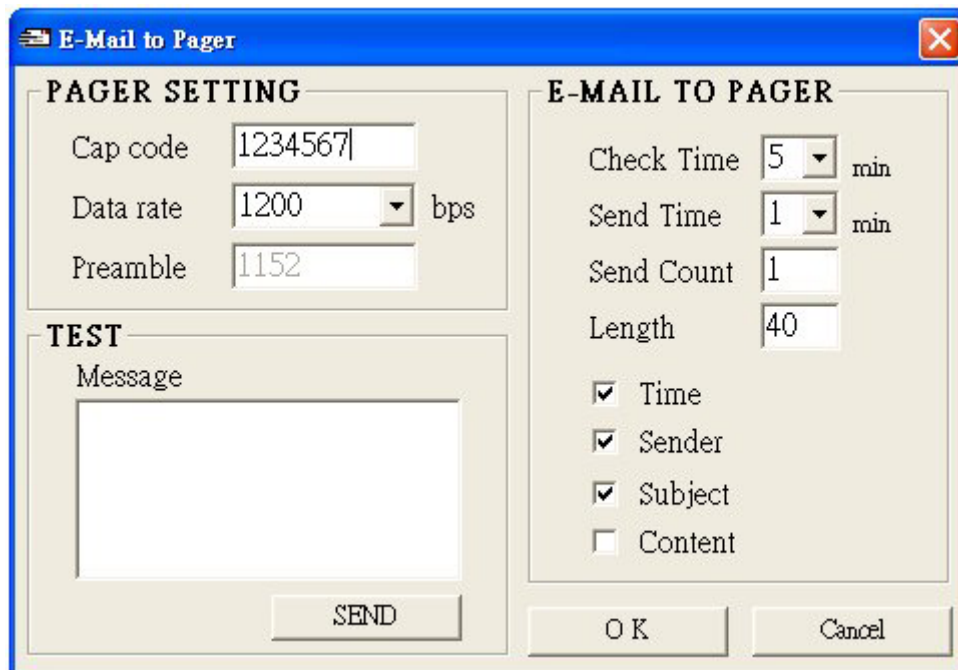
#### **A. Operation Instructions**

1. Connect the EM-898 into the USB port of your P/C or N/B

2. Install the [eMailToPager] software CD execution file into your P/C or N/B
3. Click [eMailToPager] icon to run the application software.



## Example Programming Screen as below



- a. **Capcode** : This is for 7 digits POCSAG address. And it must be same as the used receiving pager.
- b. **Date rate** : This should also be set on the same speed rate with the used pagers.  
And the baud rate is in POCSAG 512bps or 1200bps or 2400bps type only.
- c. **Check Time** : Check times per minute for your e-mail messages incoming.
- d. **Send Time** : Message forwarding to the receiving pager per set minutes.
- e. **Send count** : Counting for message forwarding times.
- f. **Length** : Each forwarding alphabet length (maximum in 40 characters).
- g. **Time**: With or without the forwarding e-mail message containing the actual receiving time.
- h. **sender**: With or without the forwarding e-mail message containing the sender name.
- i. **Subject**: With or without the forwarding e-mail message containing the subject contents.
- j. **Content**: With or without the forwarding e-mail message containing the e-mail contents.
- k. **TEST**: The EM-898 can be operated as a simple on-site office paging transmitter. Simply types in your desired message in this block and click the [SEND] icon to start the transmission to pager.

### Option [Office Pager] OS operations

2. Install the [Office Pager] software CD execution file into your P/C or N/B
3. Click [Office Pager System v1.0] icon to run the application software.



### OS set-up



Click [Setting] for contents set-up

PagerNo.	Name	Cap Code	Data Rate	State	Type
001	Duty Manger	1234567	1200	Y	Alphanumeric
002	Air con engineer	1234568	1200	Y	Alphanumeric
003	Elect engineer	1234569	1200	Y	Alphanumeric
911	Fire man	0000911	2400	Y	Alphanumeric
300	Security	0000567	1200	Y	Alphanumeric
123	a Sweeper	0001300	512	Y	Alphanumeric
210	10Fl Housekeeper	0000210	512	Y	Alphanumeric
211	11Fl Housekeeper	0000211	512	Y	Alphanumeric
212	12Fl Housekeeper	0000212	512	Y	Alphanumeric
213	13Fl Housekeeper	0000213	512	Y	Alphanumeric

↑  
 PREV  
 PAGE :  
 01 / 30  
 ↓  
 NEXT

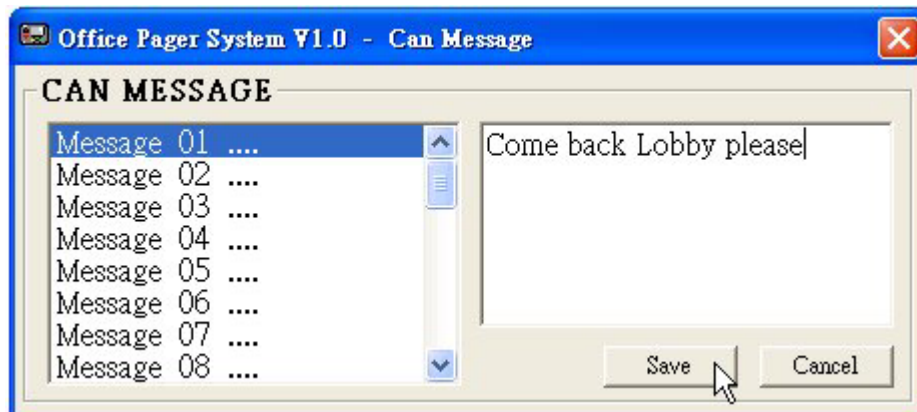
Set-up Pager No. Name, Cap code, data rate, State, and type of message....

State =Y is enable

State =N is disable

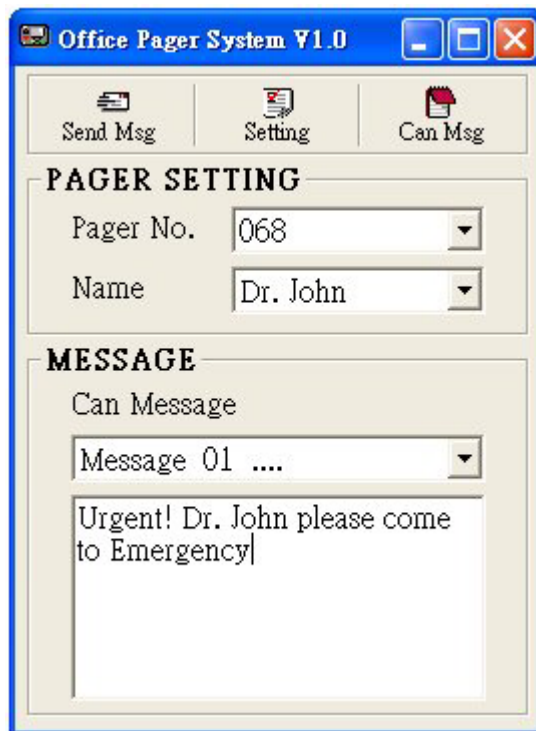
The screenshot shows the 'Office Pager System V1.0' window with three icons at the top: 'Send Msg', 'Setting', and 'Can Msg'. The 'Can Msg' icon is highlighted with a mouse cursor. Below the icons, the 'PAGER SETTING' section contains two dropdown menus: 'Pager No.' set to '001' and 'Name' set to 'Duty Manger'. The 'MESSAGE' section contains a 'Can Message' label, a dropdown menu showing 'Message 01 ....', and a text area containing 'Message 01'.

**Click [Can Msg] icon to set-up the 30 can message files**



Click [Save] icon to Save the can message files

Also you can either select the can message or directly key in the message



Click [Send Msg] to sending to pager (on-air)

